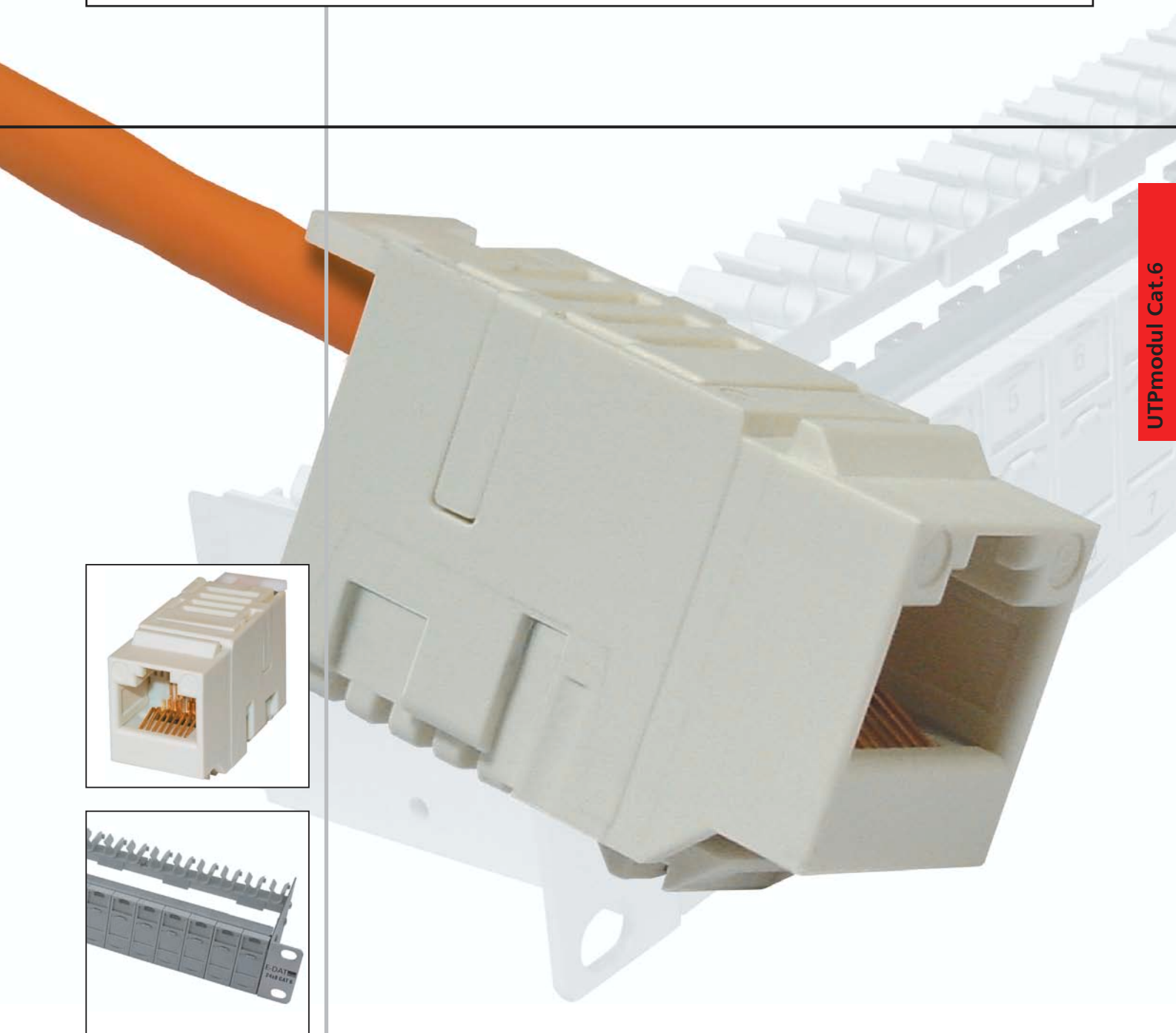


# UTP<sub>modul</sub> System Cat.6/Class E



UTPmodul Cat.6

## Features:

- Cat.6/Class E 250 MHz
- no tool required for IDC termination
- quick mounting
- for Gigabit-Ethernet

The principal item of the **UTPmodul Cat.6/Class E** termination system is the newly designed **UTPmodul**. With its excellent transmission rates, its solid plastic housing, the intelligent wire management this compact RJ45 termination module meets the requirements for modular high quality termination technology.

The compact design of the modules allows high density packaging in many applications such as 24 port patch panels. The extraordinary mounting ease, requiring no special tools is provided by the easy and quick pair wise wire application, the BTR IDC contact system and the use of a housing with only two parts.

**General Characteristics**

- Cat.6 according to IEC 60603-7-4
- Class E up to 250 MHz (on all wire combinations) according to ISO/IEC11801:9/2002 and EN50173-1:2002
- Pin assignment according to EN 50173-1
- Easy and time-saving mounting
- Reproducible installation quality
- BTR 8 pole insulation displacement connectors (IDC)
- Reusable modules (see technical data), easy to open



UTPmodul Cat.6

Technical Data	Characteristics of UTPmodul	
<b>Electrical Characteristics</b>		
Rated current at 50 °C	max. A	1
Rated voltage	max. V DC	50
Electric strength according to IEC 60603-7	max. V DC	1000
Contact resistance	mOhm	<20
Contact resistance terminal block/jack	mOhm	<200
Insulation resistance	MOhm	>500
Transmission parameter	according to ISO/IEC 11801:9/2002 EN50173-1:2002	Cat.6 / Class E
See test reports		●
ACR (all pair combinations)	in db at 100 MHz	>30
ACR (all pair combinations)	in db at 250 MHz	>10

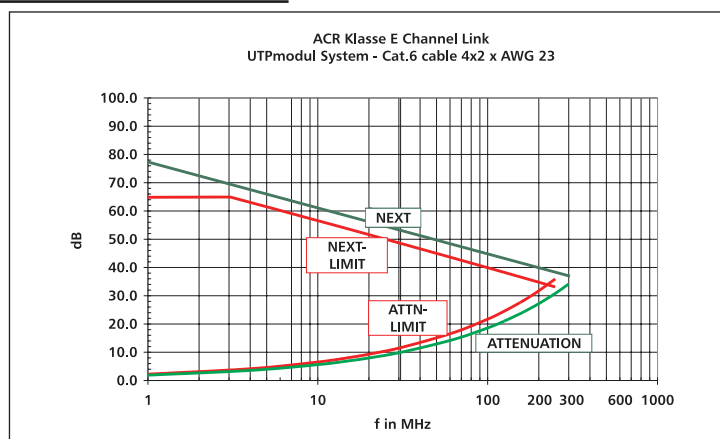
Technical Data	Characteristics of UTPmodul	
<b>Mechanical Characteristics</b>		
Plug-in force	<20 N	●
Endurance (contacts) RJ45 jack	>750 mating cycles with RJ jacks according to IEC 60603-7	●
Dimensions of RJ45 jacks	comply with IEC 60603-7	●
Wire termination		
Insulation displacement connector	wire 0.4 - 0.65 mm AWG 26 - 22 insulation 0.7 - 1.4 mm (1.6 mm)	BTR-IDC *1 *2

\*1: AWG 26/7 strands wire with 7 stranded Cu wire, bare  
\*2: reusable for AWG 22, AWG 23 and AWG 24 if using the same or higher cross section.

Technical Data	Characteristics of UTPmodul	
<b>Especially suited for the following services:</b>	Mbit/s	
Analog telephone (PBX)		●
X.21		●
V.11		●
ISDN S <sub>0</sub> , UP <sub>0</sub> , S1, S2	0.144 / 2	●
Ethernet 10BaseT	10	●
Fast-Ethernet 100BaseT4	100	●
Fast-Ethernet 100BaseTx	100	●
Token Ring 4	4	●
Token Ring 16	16	●
Token Ring 100	100	●
TPPMD (FDDI,SDDI,CDDI)	100	●
ATM (B-ISDN) 155	155	●
ATM 622	622 Mbit/s (CAP 64-Coding)	●
Gigabit Ethernet 1000 Base T	1000	●
Multimedia		●

Technical Data	Characteristics of UTPmodul	
<b>Materials</b>		
Covers	ABS, high impact	●
Patch panel module support	Al (die-cast aluminium) steel (galvanized)	●
Contact support	PBT	

**Link Performance of UTPmodul System**

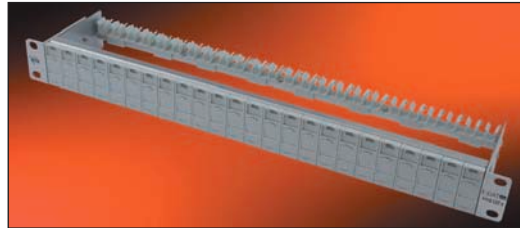


- Module support front made of silver anodized aluminium
- Installation friendly termination of the 2 to 4 pair data lines to BTR ID connectors (AWG 22 - 24), wire colour identification according to TIA/EIA 568A
- Pin assignment according to ISO/IEC 11801/EN 50173-1.  
No untwisting of the wire pairs is required up to the terminal block
- Strain relief possible by cable ties at the UTPmodul

- Optional additional strain relief at the patch panel by cable ties
- Label window for port identification, labels included to each packing unit
- Label sheet 210 x 297 mm see accessories
- Cat.6/Class E Link Performance according to ISO/IEC11801-9/2002 and EN50173-1:2002



**UTPmodul 24 x 8 Cat.6 patch panel**

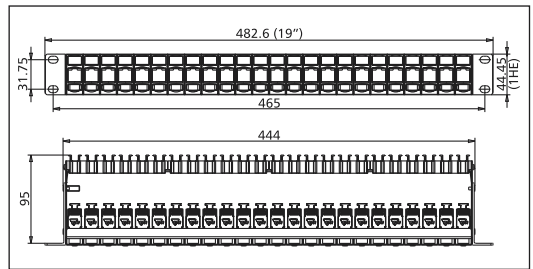


- 19" 1 RMS Cat.6 patch panel with 24 RJ45 modules, type UTPmodul 8(8)
- Standard colour of module support and dust protection covers: RAL 7035 light grey

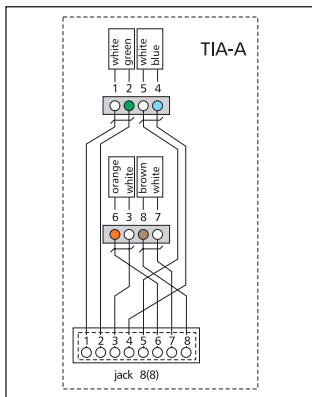
Version	P/N
UTPmodul 24 x 8 Cat.6 patch panel	130A20-E

Note	
Packing unit	1 piece

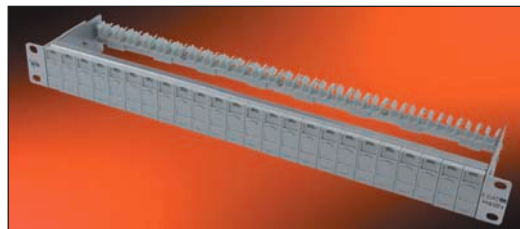
**Product Dimensions**



**Pin assignment according to ISO/IEC 11801, EN 50173-1**



**UTPmodul module support 19" 1 RMS for up to 24 E-DAT modules**



- The UTPmodul 19" module support and the UTPmodul Cat.6 modules 8(8) allow assembly of patch panels with up to 24 RJ45 ports.

Version	P/N
UTPmodul 19" module support 1RMS for UTPmodul, light grey	130A20-00-E

Note	
Packing unit	1 piece

**UTPmodul Cat.6 8(8)**



Version	P/N
UTPmodul Cat.6 8(8)	130A10-I

Note	
Packing unit	10 pieces

BTR Blumberger Telefon und  
Relais Vertriebs-GmbH is part  
of the Albert Metz Group.

**Product range of the  
Albert Metz Group**

**Blumberger Telefon und Relais  
Vertriebs-GmbH**

**IT CONNECT Division**  
Termination products and  
ancillary products for  
telecommunication and  
data transmission

info@btr-itconnect.com  
www.btr-itconnect.com

**Blumberger Telefon und Relais  
Vertriebs-GmbH**

**ELECTRONIC SYSTEMS Division**  
Intelligent components,  
interface modules, timer relays,  
measuring and monitoring relays,  
industrial relays

btr-electronic-systems@ria-btr.de  
www.btr-electronic-systems.de

**RIA CONNECT GmbH**

Solution orientated connecting  
components on printed  
circuit boards

info@ria-connect.com  
www.ria-connect.com

Your distributor:



**Blumberger  
Telefon und Relais  
Vertriebs-GmbH**  
Im Tal 2  
78176 Blumberg  
Germany  
Tel. +49 7702 533-0  
Fax +49 7702 533-433  
info@btr-itconnect.com  
www.btr-itconnect.com



032003/2.000/01/Li/899 042