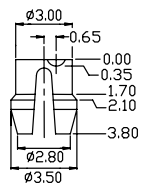
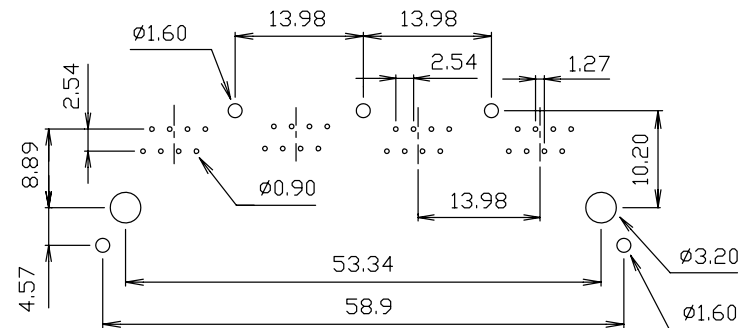
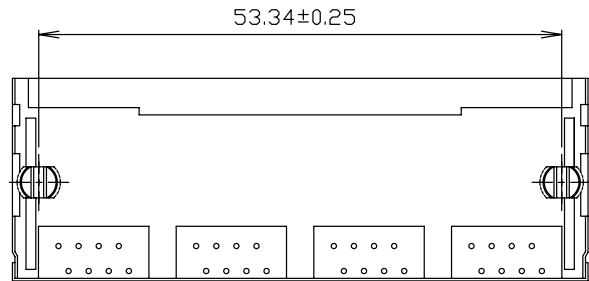


**MATERIALS:**

- HOUSING-PBT POLYESTER UL94V-0 MIXED GLASS FIBER, STANDARD COLOR-BLACK
  - CONTACTS -0.35mm THICK PHOS-BRONZE PLATED WITH HARD GOLD AND GOLD FLASH IN SOLDER AREA.
  - METAL SHIELD-0.25mm THICK COPPER ALLOY, PLATED WITH NICKEL.
- CAVITY CONFIRMS TO FCC RULES AND REGULATIONS PART 68,SUBPART F.



SPLIT-PEGS

PC Board Layout

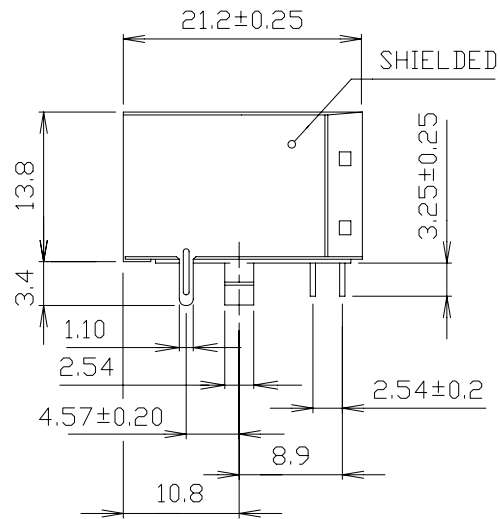
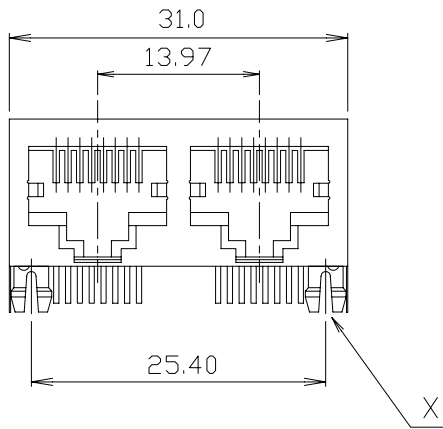
**Ordering Information**

AJT47D	8	8	4	3 - 0 0 3
Type	Positions	Contacts	Ports	Plating 3 = 30u"

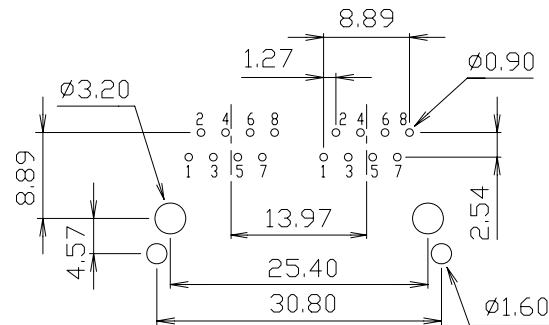
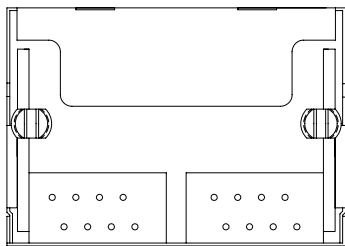
Front Peg:  
3=Front Peg 4.57 w/5 Grounding Tabs

<b>Tolerance</b> unless otherwise specified
.0 ± .25
.00 ± .13
.000 ± .05

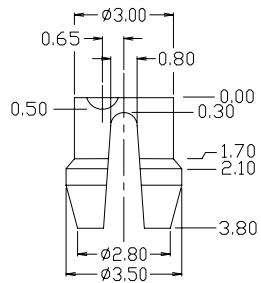
<b>RIA</b> CONNECT	P/N: AJT47D8843-003
Desc.: Side entry, shielded, thru hole modular jack	
Date: 8-31-09	Drawn By: Donna Mears
Dimensions in mm	Verified By: Mike Balekdjian



MATERIAL:  
 •HOUSING-PBT POLYESTER UL94V-0  
 MIXED GLASS FIBER.  
 STANDARD COLOR-BLACK  
 •CONTACTS-0.35mm THICK PHOS-BRONZE PLATED  
 WITH HARD GOLD AND GOLD FLASH  
 IN SOLDER AREA.  
 •MATEL SHIELD-0.25mm THICK COPPER ALLOY,  
 PLATED WITH NICKEL.  
 CAVITY CONFIRMS TO FCC RULES AND REGULATIONS  
 PART 68,SUBPART F.



PCB LAYOUT  
 Ref.



DETAIL X

Ordering Information

AJT47D	8	8	2	X
Type	Positions	Contacts	Ports	Plating 1=6u" 3=30u"

Tolerance unless otherwise specified mm .0 ± .25 .00 ± .13 .000 ± .05
--

<b>RIA</b> CONNECT	P/N: AJT47D882X
Desc.: Side entry, shielded, thru hole modular jack	
Date: 3-4-10	Drawn By: Donna Mears
Dimensions in mm	Verified By: Mike Balekdjian