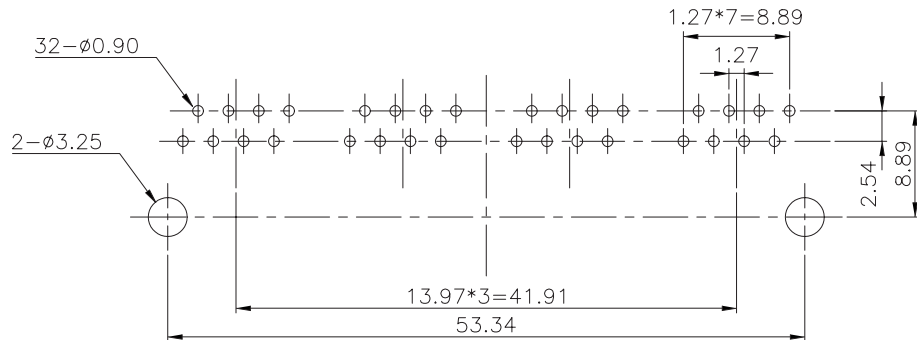
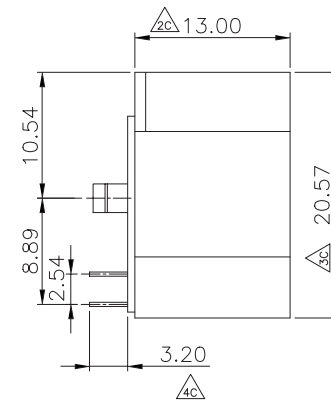


PCB LAYOUT/TOP VIEW



MATERIALS:

PLASTIC HOUSING: ENGINEERING THERMOPLASTIC
 FLAMMABILITY RATING UL 94V-0.
 INSERT: ENGINEERING THERMOPLASTIC
 FLAMMABILITY RATING UL 94V-0.(COLOR GRAY)
 CONTACTS: 0.35MM THICKNESS PHOSPHOR BRONZE
 PLATING: GOLD PLATING OVER NICKEL IN CONTACT.
 TIN PLATING OVER NICKEL IN SOLDER AREA.

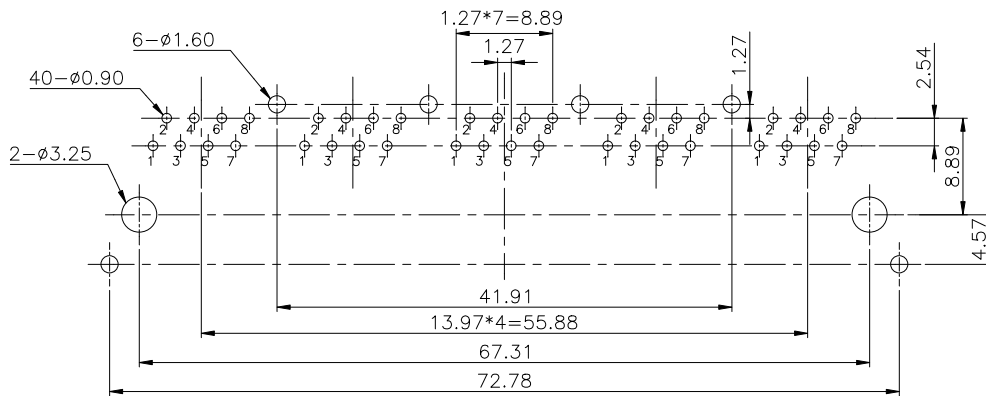
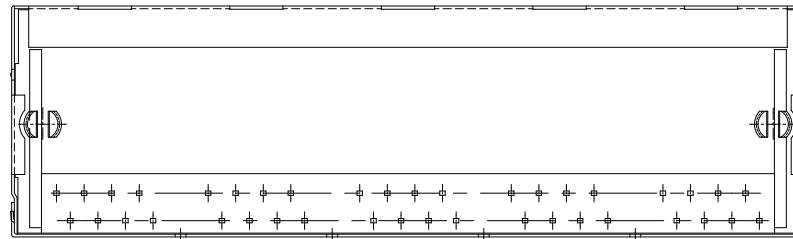
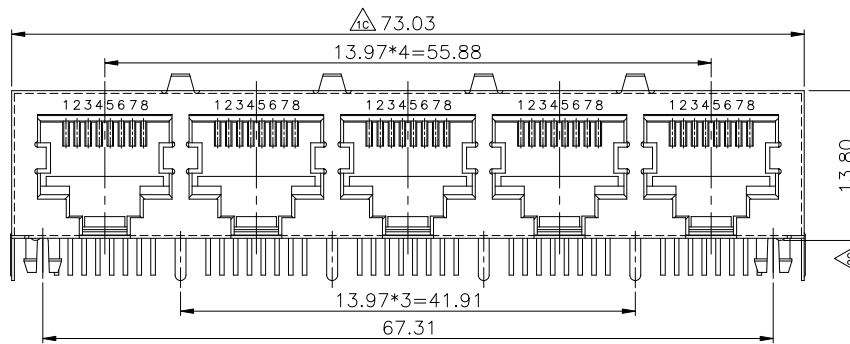


Ordering Information

AJT40C	8	8	4	X
Type	Positions	Contacts	Ports	Plating
				1 = 6u" 3 = 30u"

<p>Tolerance unless otherwise specified</p> <p>X ± .50 .X ± .38 .XX ± .25 .XXX ± .10</p>

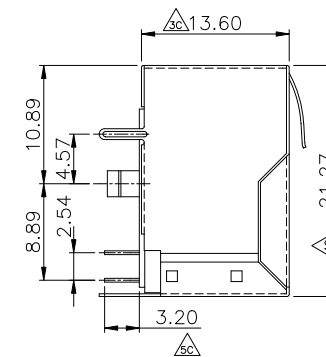
RIA CONNECT	P/N: AJT40C884X
Desc.: Side entry, CAT 5, unshielded, thru hole modular jack	
Date: 5-10-10	Drawn By: Donna Mears
Dimensions in mm	Verified By: Mike Balekdjian



PCB LAYOUT/TOP VIEW

MATERIALS:

PLASTIC HOUSING: ENGINEERING THERMOPLASTIC
 FLAMMABILITY RATING UL 94V-0.
 INSERT: ENGINEERING THERMOPLASTIC
 FLAMMABILITY RATING UL 94V-0.(COLOR GRAY)
 CONTACTS: 0.35mm THICKNESS PHOSPHOR BRONZE
 PLATING: GOLD PLATING OVER NICKEL IN CONTACT.
 TIN PLATING OVER NICKEL IN SOLDER AREA.
 SHIELDED: BRASS WITH NICKEL PLATED

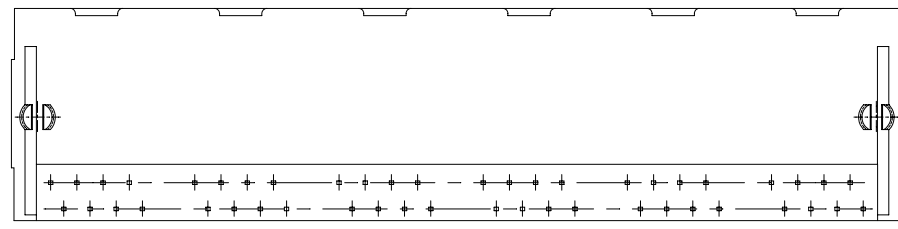
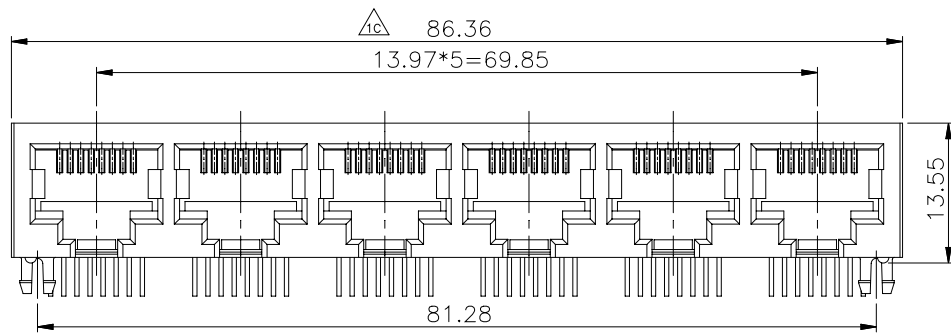


Ordering Information

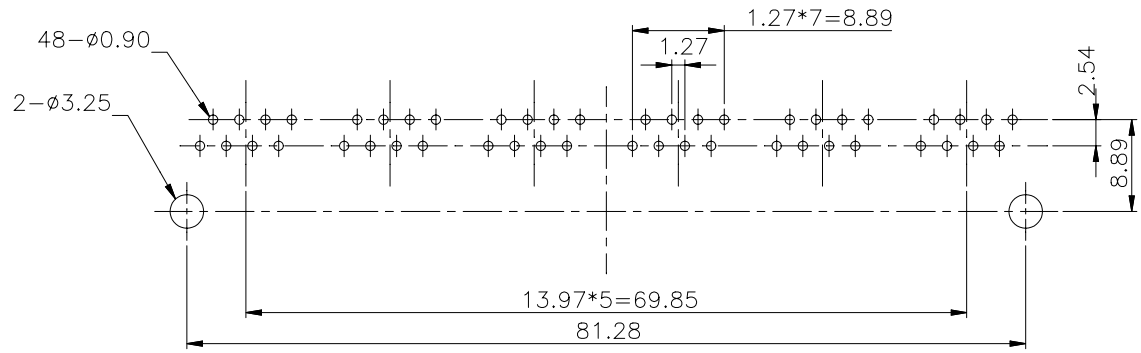
AJT40C	8	8	5	X
Type	Positions	Contacts	Ports	Plating
				1 = 6u"
				3 = 30u"

Tolerance
 unless otherwise specified
 mm
 X ± .50
 .X ± .38
 .XX ± .25
 .XXX ± .10
 angles ± 3°

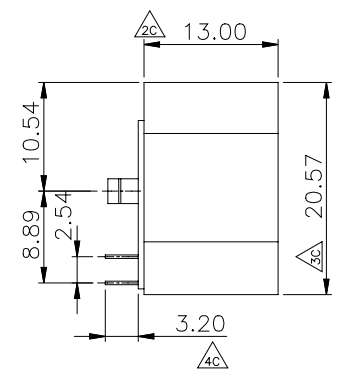
RIA CONNECT	P/N: AJT40C885X
Desc.: Side entry, CAT 5, unshielded, thru hole modular jack	
Date: 6-22-10	
Dimensions in mm	



PCB LAYOUT/TOP VIEW



MATERIALS:
 PLASTIC HOUSING: ENGINEERING THERMOPLASTIC
 FLAMMABILITY RATING UL 94V-0.
 INSERT: ENGINEERING THERMOPLASTIC
 FLAMMABILITY RATING UL 94V-0.(COLOR GRAY)
 CONTACTS: 0.35mm THICKNESS PHOSPHOR BRONZE
 PLATING: GOLD PLATING OVER NICKEL IN CONTACT.
 TIN PLATING OVER NICKEL IN SOLDER AREA.

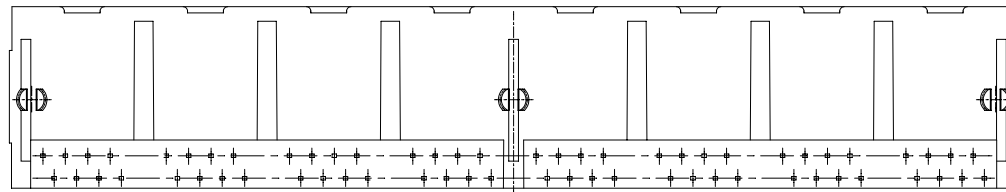
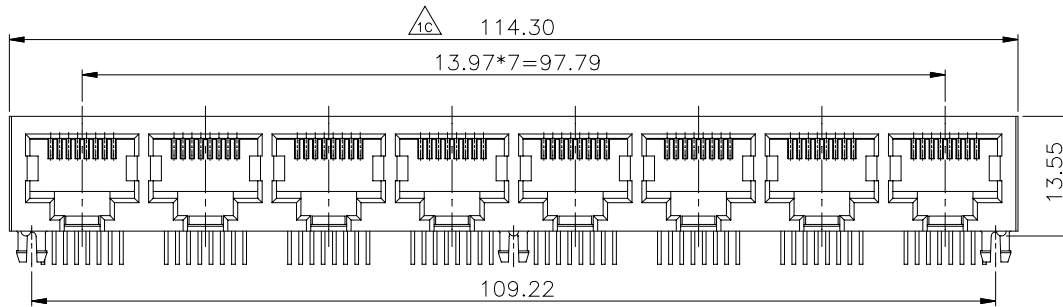


Ordering Information

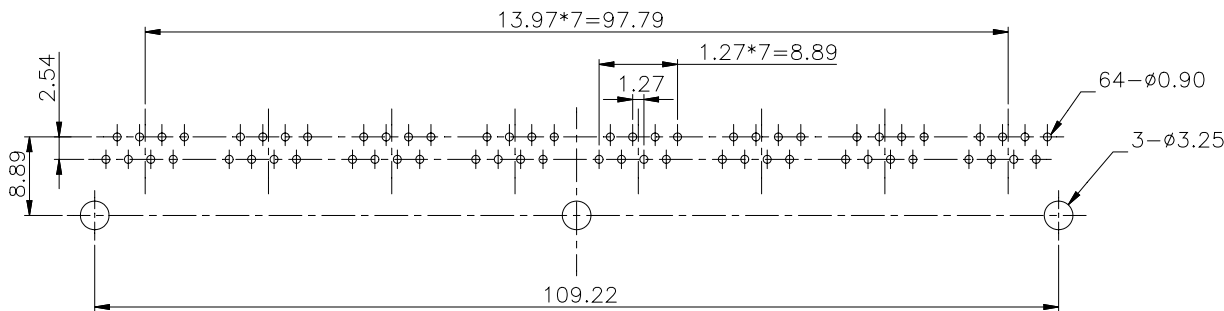
AJT40C	8	8	6	X
Type	Positions	Contacts	Ports	Plating 1 = 6u" 3 = 30u"

<p>Tolerance unless otherwise specified</p> <p>X ± .50 .X ± .38 .XX ± .25 .XXX ± .10 angles ± 3°</p>

	P/N: AJT40C886X
Desc.: Side entry, CAT 5, unshielded, thru hole modular jack	
Date: 5-10-10 Dimensions in mm	Drawn By: Donna Mears Verified By: Mike Balekdjian



PCB LAYOUT/TOP VIEW



MATERIALS:

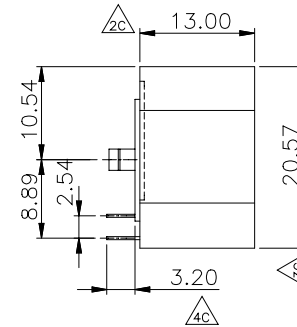
PLASTIC HOUSING: ENGINEERING THERMOPLASTIC
FLAMMABILITY RATING UL 94V-0.

INSERT: ENGINEERING THERMOPLASTIC
FLAMMABILITY RATING UL 94V-0.(COLOR GRAY)

CONTACTS: 0.35mm THICKNESS PHOSPHOR BRONZE

PLATING: GOLD PLATING OVER NICKEL IN CONTACT.

TIN PLATING OVER NICKEL IN SOLDER AREA.



Ordering Information

AJT40C	8	8	8	X
Type	Positions	Contacts	Ports	Plating 1 = 6u" 3 = 30u"

<p>Tolerance unless otherwise specified</p> <p>X ± .50 .X ± .38 .XX ± .25 .XXX ± .10 angles ± 3°</p>

RIA CONNECT	P/N: AJT40C888X
Desc.: Side entry, CAT 5, unshielded, thru hole modular jack	
Date: 5-10-10	Drawn By: Donna Mears
Dimensions in mm	Verified By: Mike Balekdjian