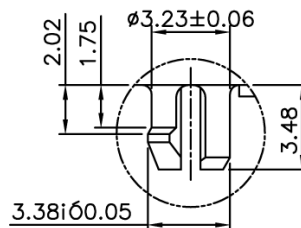
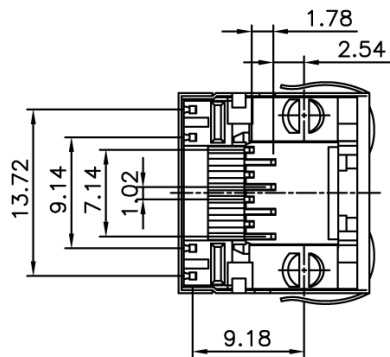


PCB LAYOUT (TOP VIEW)  
RECOMMENDED



DETAIL X

**MATERIAL:**

- HOUSING—DSM STANYL TE250F6 (NYLON-46)  
HEAT DEFLECTION TEMP.290°  
BLACK COLOR, UL94V-0
- CONTACTS—0.35mm THICK PHOS-BRONZE PLATED  
WITH HARD GOLD AND GOLD FLASH IN  
SOLDER AREA.
- SHIELD—0.25mm THICK COPPER ALLOY,  
PLATED WITH NICKEL.

CAVITY CONFIRMS TO FCC RULES AND REGULATIONS  
PART 68,SUBPART F.

**Ordering Information**

AJT34L 8 8 1 X-0 X X

Type Positions Contacts Ports Plating  
1 = 6u"  
3 = 30u"

Tabs  
0 = No Shield  
1 = No Tabs  
2 = Top Tabs  
3 = Side Tabs  
4 = Top & Side Tabs

LED1	LED2	LED1	LED2
1 = Yellow	Green	5 = Green	Red
2 = Green	Green	6 = Red	Green
3 = Green	Yellow	7 = Yellow	Yellow
4 = Green	Orange	8 = Grn/Ylw	Grn/Ylw
		9 = Red/Grn	Red/Grn

**Tolerance**  
unless otherwise specified

.0 ± 0.25  
.00 ± 0.13  
.000 ± 0.05

<b>RIA</b> CONNECT	P/N: AJT34L881X-0XX
Desc.: Side entry, shielded, LED, thru hole modular jack	
Date: 9-1-11	Drawn By: Donna Mears
Dimensions in mm	Verified By: Mike Balekdjian